



Community Resource Inventory Online

On the web at: nemo.uconn.edu/tools/cri

With the Community Resource Inventory (CRI) Online you can generate natural and cultural resource maps to create an inventory for your community, all with little or no GIS (geographic information systems) experience.

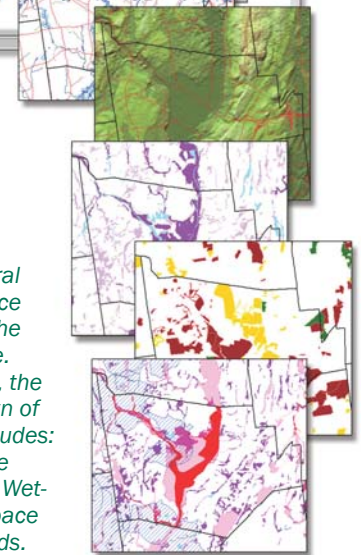
The University of Connecticut's NEMO program, in association with CT DEP, has created the

CRI Online website to provide organized maps, resources, tutorials, examples and other resources that will assist you in getting started with natural resource-based planning. By working through the website, you will develop a basic inventory of your town's natural and cultural resources, upon which you can build.

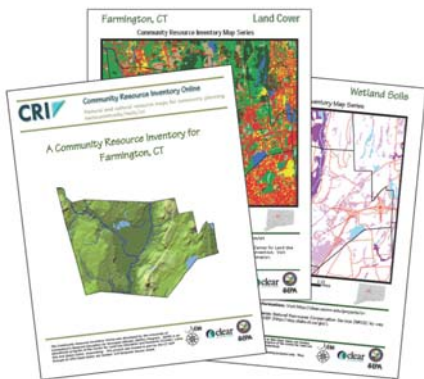
You can then print or download the maps to your computer and use them to help your community plan for the future. The CRI Online website also features an interactive map so you can combine different resource layers to create customized maps for your town's inventory. You will also find ideas and links on how to expand and apply your inventory to town planning.

So get online now and start mapping.

Farmington, CT Land Cover Map Set



A selection of natural and cultural resource maps available in the Build Your CRI page. From top to bottom, the map set for the town of Farmington, CT includes: Land Cover, Surface Water, Topography, Wetland Soils, Open Space and Regulated Lands.



From the Print Your CRI web page, you can either print single maps, or the whole set complete with a title page. (Above) Sample pages for Farmington, CT.

Connecticut NEMO is an educational program of the University of Connecticut Center for Land Use Education and Research (CLEAR). Land, Sea and Space Grant, cooperating. The CRI On-line was funded, in part, by the CT DEP through an EPA Clean Water Act Section 319 Nonpoint Source Grant. rev. 5-10

For more information about the website or NEMO workshops contact CT NEMO at (860) 345-4511 or email nemo@uconn.edu.

